

AcuSense

ColorVu



MORE THAN WHAT YOU SEE
TURBO HD 5.0 SOLUTION

Ever since introduced its Turbo HD technology back in 2013, security industry professionals have praised its amazing ability. The Turbo HD line transforms analogue CCTV video into high quality, high definition surveillance. It's more than an upgrade – it's revolutionary technology. Installers love it because they can install it using existing coaxial cable (and other wiring, too); business owners love it because it's cost-effective; and everyone who uses it loves it for its clear, sharp imaging, high reliability, and ease of use.

Each iteration of the Turbo HD product portfolio advances the technology to the next amazing level. Version 1.0 took analogue resolutions from 420 TVL up to Hi-Def 1080p – by nothing more than plugging old wires into new cameras and DVRs! Fast-forward a few years to version 4.0, where Turbo products sent analogue signals up to 8 MP and began using the H.265 high-efficiency codec; what's more, Hikvision's signature H.265+ codec maintains 4K video while cutting bandwidth and storage requirements down by as much as 87%!



Turbo HD HISTORY

Turbo 1.0

- Resolution: from 420TVL to HD1080P
- Compression: H.264

Turbo 4.0

- Ultra HD: up to 8MP
- Compression: H.265 & H.265+
- Ultra low light technology
- Updated Installation flexibility: PoC 2.0

Turbo 3.0

- Resolution: Up to 5MP
- Compression: H.264 & H.264+
- Compatibility: TVI / CVBS / IPC along with 2 more standards
- Installation flexibility: PoC 1.0

Turbo 5.0

Turbo HD 5.0

MORE THAN WHAT YOU SEE

And it gets even better.

Boasting new features and functionalities, Turbo HD 5.0 once again takes analogue and CCTV systems into the future. This new version transmits vivid color imaging 24 hours a day, with a brightness and clarity not seen before in TVI systems. And – for the first time in Turbo HD history – deep learning technology provides high tech security surveillance capabilities that surpass industry standards worldwide.

Read on for more information about what Turbo HD 5.0 – the newest and best version to date – can do for your next upgrade.



AcuSense Turbo HD DVR

Based on deep learning algorithms, the AcuSense technology offers improved VCA accuracy.

- Deep-learning algorithm
- GPU architecture
- Human/vehicle extraction



ColorVu Turbo HD Camera

With 24 hour chromatic imaging, the ColorVu technology turns dark nights into colorful day.

- Advanced lens
- High-sensitivity
- Friendly lighting

AcuSense Turbo HD DVR

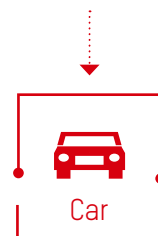
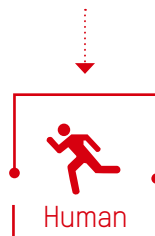
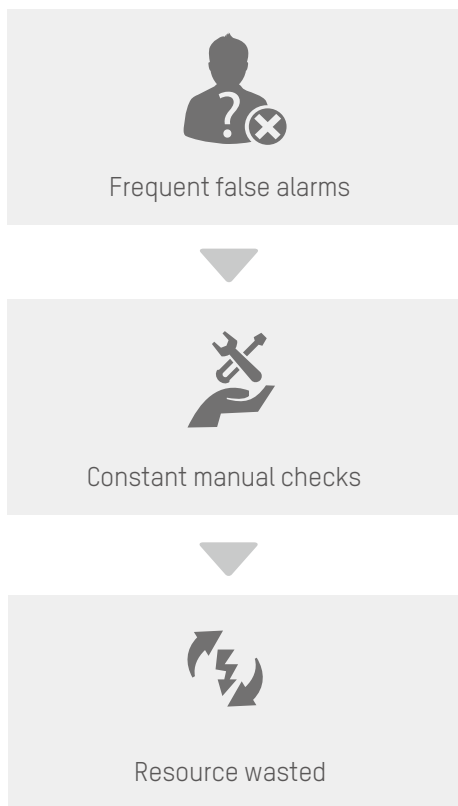
INTELLIGENTLY ACCURATE WITH DEEP LEARNING



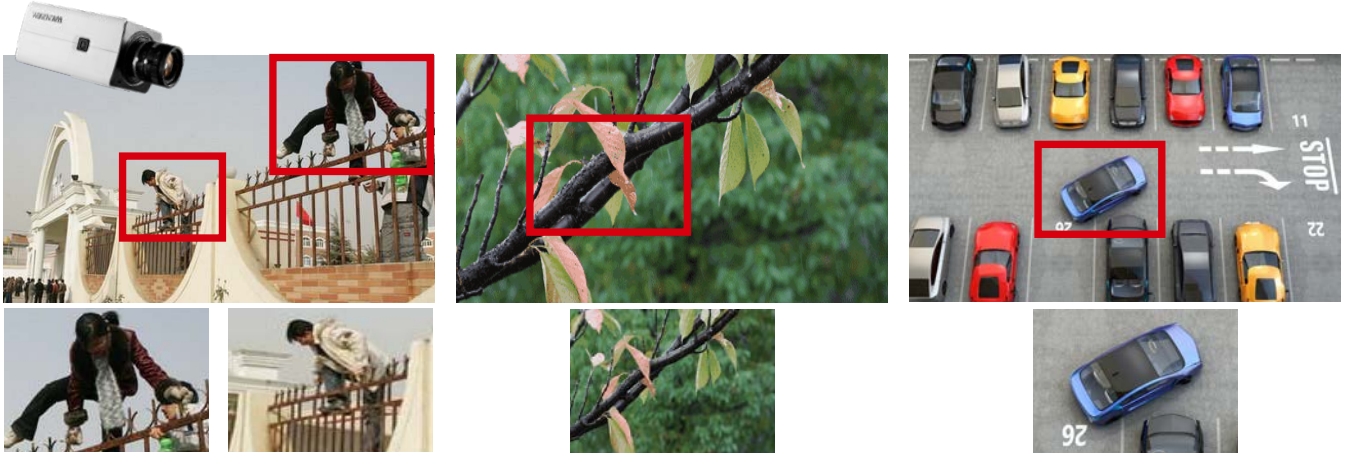
Problems with Conventional Systems

- Conventional security systems only detect moving targets without further analysis
- Frequent false alarms create constant problems for users

Target Extraction



False Alarm Filter



Conventional Perimeter Protection

Perimeter Protection with Deep Learning



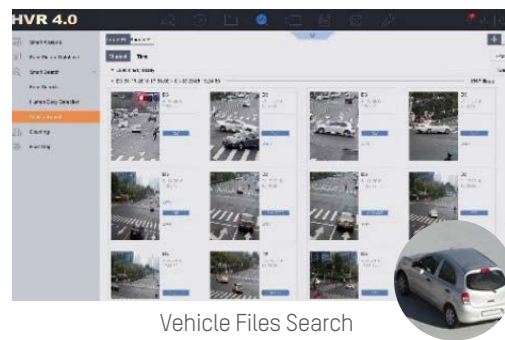
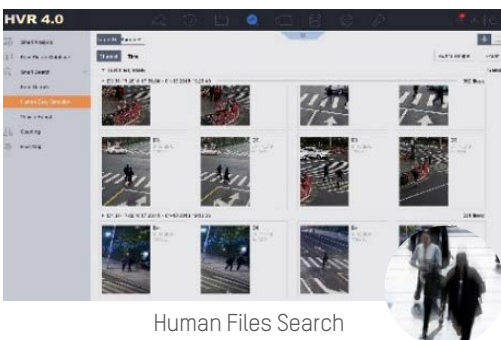
False alarms cannot be discarded!



False alarms are filtered

Quick Target Search

Infused with the latest deep-learning technology, AcuSense DVRs are able to extract human and vehicles from massive video data and store snapshots of the objects for efficient video footage search and retrieval.



Smart human/vehicle
recognition
Efficient video retrieval

ColorVu Turbo HD Camera

ROUND-THE-CLOCK VIVID COLOR BOOSTER

Advanced lens

- F1.0 super aperture
- BBAR coating
- ED Optical glass



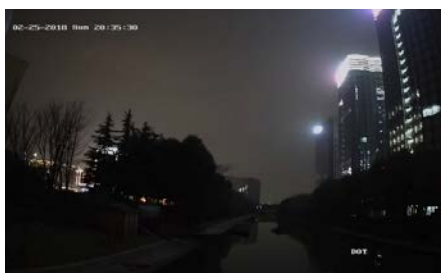
High-sensitivity

- Smart FSI technology
- Self-adaptive 3D DNR algorithm

Friendly Lighting

- Anti-glare diffusion lens
- Warm supplemental lighting

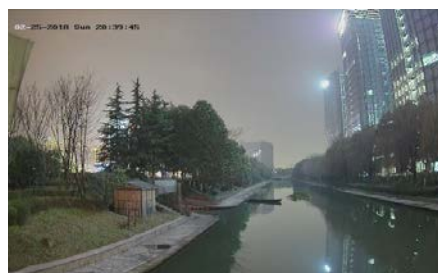
24/7 Chromatic Image -without opening supplement light



Conventional HD1080p Camera



Ultra low light and HD1080p Camera



ColorVu Turbo HD Camera



Conventional HD1080p Camera



Ultra low light and HD1080p Camera



ColorVu Turbo HD Camera

24/7 Chromatic Image -with supplement light opening



Conventional HD1080p Camera



Ultra low light and HD1080p Camera



ColorVu Turbo HD Camera

Turbo HD 5.0